



MD BARNS - America's #1 Choice in Strength and Longevity

The following explains why - *Please read on to help you make an informed decision:*

MD Enterprises is the industry leader in design, manufacture and installation of pre-engineered barns and buildings. Founded in 1974, MD Enterprises has served over 160,000 customers nationwide and internationally. MD Enterprises prides itself on its financial stability and traditionally strong vendor relationships. By using only top grade raw materials, MD produces state-of-the-art components which are engineered to be the safest and strongest in the marketplace. MD Enterprises designs and fabricates its own components and roofing system and maintains total control over the quality and release of its products. This enables MD to offer generous customer warranties with complete confidence.

MD Barns is the complete manufacturing company in the horse housing industry:

Breezeway Truss



RCA Window Truss



Clear Span Truss



MD's exclusive design of our roof support is our truss system. The structural design and configuration of the trusses make MD's system the strongest in the industry. The benefits of our unique bow truss system include stability and strength that prevents deflection and supports our roof securely for our rated wind & snow loads. MD's RCA Truss furnishes a generous open space of 18" x 45" for added ventilation and lighting which is approximately 50% more than alternative systems. If you opt to incorporate RCA windows MD can provide them as well. As an added plus, all of our windows come standard with screens.

Walls - Siding Channel/Wall Connectors



MD's wall panel framework is manufactured from 14 gauge Galvanized Steel, grade D-50, 50,000 lb. yield strength per ASTM A653-98 in our exclusive roll-formed shape. The precision fit of the laminated wall within the custom roll-formed galvanized-track-channel grips the panel to reduce wear or grooving and the mitered corners adds structural strength to the wall system. This produces a smooth finish to ensure your horse does not injure itself or have its mane or tail snag on a wall system. Combining the panel construction with the anchoring devices of the connector columns, the MD system flexes two ways and absorbs significant impact from horses. This is guaranteed with MD's "Life Time Kick-Thru Wall Warranty." The standard MD wall system has passed rigorous ICC testing for structural integrity (ESR-1146). This means your building permit process should go smoothly.

Weep Hole



MD panels rest on a bottom channel featuring our exclusive weep hole design that not only allows moisture to escape from inside the walls, but also holds the panel off the bottom of the channel by 3/8" to insure complete breathability and panel longevity.

Columns/Post



All of MD's posts on our overhang and porch systems are 3" x 3" square, and are made of Galvanized Steel 13 gauge. These posts are anchored into building code designed footings.

Roofing



Manufactured in our facility, MD's "Armor Grip" Roof Panels are formed from a 26 gauge Zincalume/Galvalume coil base material to assure you a long-lasting, safe roof. Factory applied color finishes are an attractive option. MD's exclusive interlocking system does not require additional sealants needed for other types of roofing systems. The roof panels are interlocked to each other and secured with #12 x 1" Tek Screws with 5/8" Neoprene gaskets per flute at each purlin line. MD provides a written 20-year Warranty on its roofing. Most other building system manufacturers purchase their roofing from outside vendors, roll-formed into panels that require about a foot of overlap and caulking to prevent leaks. This wastes materials and money, and may cause noisy flutter in the winds. MD manufactures the highest profile which makes MD roof much stronger than the lower profiles used in the marketplace.

Facia



MD's exclusive facia design is manufactured in our facility with the same long-lasting material as MD roof panels. This unique design diverts water away from the stalls to prevent moisture saturation caused by heavy rain fall. MD's facia is aesthetically appealing and is offered as a standard feature at a competitive price.

Purlins



MD's exclusively designed "Z" purlins are roll-formed in our factory using 14 gauge Galvanized Steel, Grade D-50, 65 KSI yield strength steel per ASTM A653-98. Laboratory testing has proven the structural strength of MD's "Z" purlins, which are approximately 44% stronger than the "C" purlins typically used in barn construction.

Roof-T's



MD's unique "Roof-T" system adds strength and support to its 2-foot roof overhang structure. This is a standard feature for all MD barns.

Standard Stall Front Features



Retractable Stall Door Latch

MD's new exclusively designed Retractable Latching System, for all MD grilled stall doors, enhances safety and provides greater ease as you enter and exit your stall simply by opening and closing the door with one hand.

Flush Mount Latch

MD's new state-of-the-art, custom designed flush-mount door latch is a fully engineered, plated zinc latching system allowing easy one-handed access and is flush to the door to ensure the safety for you and your horse. This is a standard feature for all Solid Feed Doors, Lazy Joe Feeders and Solid Dutch Doors.

Grill

MD's stall front grill work tube is 1-3/8" O.D. .055" wall thickness. Each individual bar on MD's grill work is hand-welded 360 degrees at top and bottom for strength and complete protection against rust-causing moisture. All welds are then treated with a zinc-based primer and sprayed with galvanized paint to resist rust and corrosion.

Piano Hinge

MD's Piano Hinge, a standard feature on our feeder doors, water bucket doors and Lazy Joe feeders, adds extra strength and provides alignment ease.

Flush Mount Latch



Retractable Latch



Grill Work



Piano Hinge



Door Trolley



MD Barns color palette for interior and exterior finishes

Siding & Roofing Colors:



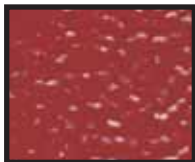
Old Town Grey



Saddle Tan



Desert Stone



Crimson Red



Polar White

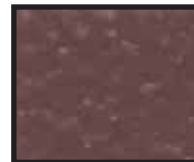


Seawolf

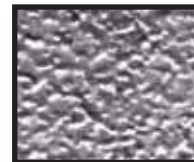


Forest Green

Siding Colors:



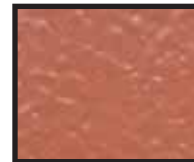
Cocoa Brown



Galvanized



Kelly Green



Terra Cotta



Slate Grey

Roofing Colors:

Interior Finish (only)



Adobe



Honey Tone



Off White



Stucco 1



Stucco 2



T & G



Customer Service

From the start, MD has been committed to its customers and provides an outstanding Customer Service Department dedicated to offering the best in quality assurance. This department communicates with the customer at all times and assures that the communication does not stop once the barn is delivered. MD is not satisfied until the customer is.

Quality Control

MD is committed to building its product to the prescribed standards and specifications that warrant the customer's ultimate satisfaction. MD confirms all raw materials meet specifications and are made properly so the end result meets and exceeds the customer's requirements. MD is one of the few barn manufacturers that provide a dedicated quality assurance team to ensure all products are the highest standards on the market today.

General

All building materials shall be fire restrictive, per UBC Chapter 4, as applied to building construction materials; which means a material which will not ignite and burn when subjected to fire. MD walls are ICC approved for structural integrity (ESR-1146). MD has a Los Angeles City Fabricators License (#1614) as well as a San Bernardino County Fabricators License (#163).



NOW YOU CAN "Build A Better Barn"!

800-343-BARN(2276) - www.mdbarncompany.com